



## Hours of Operation:

We are available each evening from 5:00 pm - 10:00 pm and are open all holidays.

## Services Provided:

Call Specialists at the Franklin-Fulton Community Support Program are here to offer:

- Support
- Information/Resources
- Referrals

**We listen.**





The Mental Health Association of Franklin and Fulton Counties envisions a just, humane and healthy society in which all people are accorded respect, dignity and the opportunity to achieve their full potential free from stigma and prejudice.

Contact us:

MHAFF.org  
info@mhaff.org



 **Facebook**  
@MentalHealthAssociationofFranklinandFultonCounties

 **LinkedIn**  
MentalHealthAssociationofFranklinandFultonCounties

 **Instagram**  
CSP.MHAFF

**Franklin County:**  
478 Grant Street  
Chambersburg, PA 17201  
p: 717-264-4301  
f: 717-264-3591

**Fulton County:**  
301 East Maple Street  
McConnellsburg, PA 17233  
p: 717-485-4642

HelpLine: Daily 5:00-10:00pm 717-264-2916

Funded through Franklin/Fulton MH/IDD/EI



Mental Health Association of Franklin  
and Fulton Counties

# HelpLine

Free and Confidential



A service of the Community Support  
Program (CSP)

## We're Here to Help.

Are you feeling  
Stressed?  
Need to vent?  
Frustrated?  
Overwhelmed?  
Just need to talk?

Support is just a phone call away.

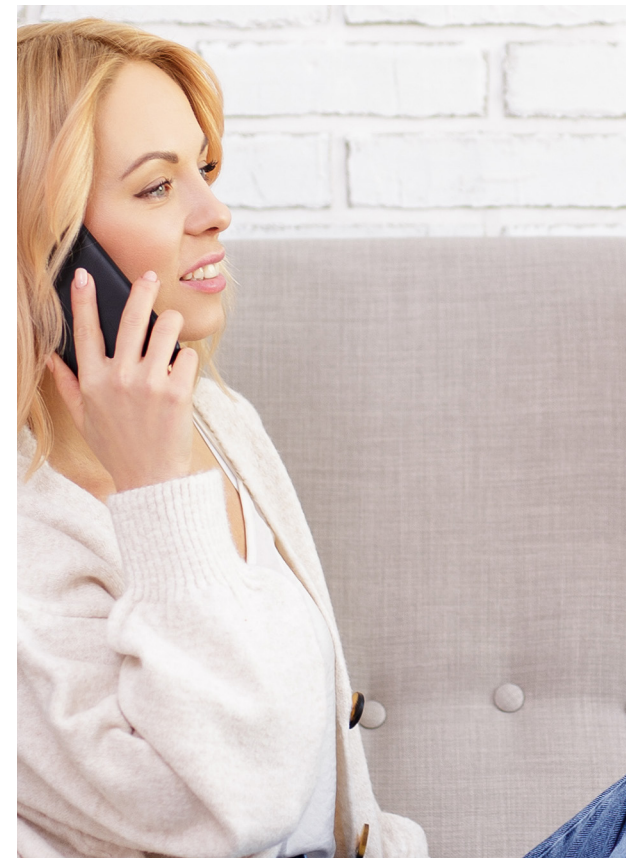
Sometimes what we need to feel better and move forward is the chance to talk with someone.

## We Believe in Recovery

HelpLine Call Specialists are here to share resources, information, and support to help you with your own recovery journey.

## You Are Not Alone.

Talking helps and we're here to listen.



**Franklin and Fulton County Residents:**

**Call (717) 264-2916**

Franklin-Fulton Community Support Program  
Promoting Wellness in our Community